

BERRY-LICIOUS SCARF & HAT

DESIGNS BY WILLENA NANTON



BRIGHT BERRY SHADES WORKED IN AN EYE-CATCHING PATTERN OF BLOCKS, CHECKS AND STRIPES GIVE STANDOUT STYLE TO THIS WARMER SET. OPTIONAL LOOPY FRINGE ADDS A TOUCH OF FUN.

SKILL LEVEL  INTERMEDIATE

FINISHED SIZES

Hat: One size fits most

Scarf: 6¼ x 64 inches

MATERIALS

- Lion Brand Vanna's Choice medium (worsted) weight yarn (3½ oz/170 yds/100g per skein):
2 skeins #144 magenta 
- Lion Brand Vanna's Choice Baby medium (worsted) weight yarn (3½ oz/170 yds/100g per skein):
2 skeins #139 berrylicious
- Lion Brand Homespun bulky (chunky) weight yarn (6 oz/185 yds/170g per skein):
2 skeins #385 fuchsia 
- Sizes H/8/5mm and I/9/5.5mm crochet hooks or size needed to obtain gauge
- Tapestry needle
- Stitch marker

GAUGE

Size H hook and medium yarn: 7 sc = 2 inches; 7 sc rows = 2 inches

PATTERN NOTES

Always change color in last stitch, do not fasten off when changing colors.

Carry color not in use loosely along top of work, and work over it.

Each square on chart equals one single crochet.

Work in continuous rounds, do not turn or join unless otherwise stated.

Mark first stitch of round.

SCARF

Row 1: With size H hook and magenta, ch 21, sc in 2nd ch from hook and in each ch across, turn. (20 sc)

Row 2: Ch 1, sc in each st across, **changing colors** (see *Stitch Guide and Pattern Notes*) to berrylicious in last st, turn.

Row 3: Ch 1, sc in each st across, turn.

Row 4: Ch 1, sc in each st across, changing to magenta, turn. **Do not fasten off** (see *Pattern Notes*) berrylicious.

Row 5: Ch 1, sc in each st across, turn.

Row 6: Ch 1, sc in each st across, changing to berrylicious, turn.

Rows 7–10: Rep rows 3–6.

Rows 11–84: Ch 1, sc in each st across, changing colors according to chart (see *Fig. 1*), turn.

Rows 85–196: Rep rows 11–84 consecutively on chart. At end of last row, fasten off.

Side Edging

Working in ends of rows, with I hook, join fuchsia with sc in end of first row, [ch 1, sk next row, sc in next row] across. Fasten off.

Rep on opposite edge.

End Border

Row 1: Working in sts across last row, with I hook, join fuchsia with sc in end of Side Edging, [ch 1, sk next st, sc in next st] across, ending with sc in last st, turn.

Row 2: Ch 1, sc in first st, ch 5, sk next st and ch sp, sc in next st, [ch 5, sk next ch sp, sc in next st] across, turn.

Rows 3–5: Ch 1, sc in first st, [ch 5, sc in next ch sp] across, turn.

Row 6: Ch 1, sc in first st, 6 sc in each ch sp across, ending with sc in last st. Fasten off.

Rep End Border on rem end working in starting ch of opposite side of row 1 on Scarf.

HAT

Rnd 1: With size H hook and magenta, ch 2, 6 sc in 2nd ch from hook, **do not join** (see *Pattern Notes*). (6 sc)

Rnd 2: 2 sc in each st around. (12 sc)

Rnd 3: [Sc in next st, 2 sc in next st] around, **changing colors** (see *Stitch Guide and Pattern Notes*) to berrylicious in last st. **Do not fasten off** (see *Pattern Notes*) colors at end of rnds. (18 sc)

Rnd 4: [Sc in each of next 2 sts, 2 sc in next st] around, changing to magenta. (24 sc)

Rnd 5: [Sc in each of next 3 sts, 2 sc in next st] around, changing to berrylicious. (30 sc)

Rnd 6: [Sc in each of next 4 sts, 2 sc in next st] around, changing to magenta. (36 sc)

Rnd 7: [Sc in each of next 5 sts, 2 sc in next st] around, changing to berrylicious. (42 sc)

Rnd 8: [Sc in each of next 6 sts, 2 sc in next st] around, changing to magenta. (48 sc)

Rnd 9: [Sc in each of next 7 sts, 2 sc in next st] around, changing to berrylicious. (54 sc)

Rnd 10: [Sc in each of next 8 sts, 2 sc in next st] around, changing to magenta. (60 sc)

Rnd 11: [Sc in each of next 9 sts, 2 sc in next st] around, changing to berrylicious. (66 sc)

Rnd 12: [Sc in each of next 10 sts, 2 sc in next st] twice, [sc in each of next 10 sts, 2 sc in next st] twice, changing to magenta. (70 sc)

Rnd 13: Sc in each st around, changing to berrylicious.

Rnd 14: Ch 1, sc in each st around, changing to magenta.

Rnd 15: Ch 1, sc in each st around, changing to berrylicious.

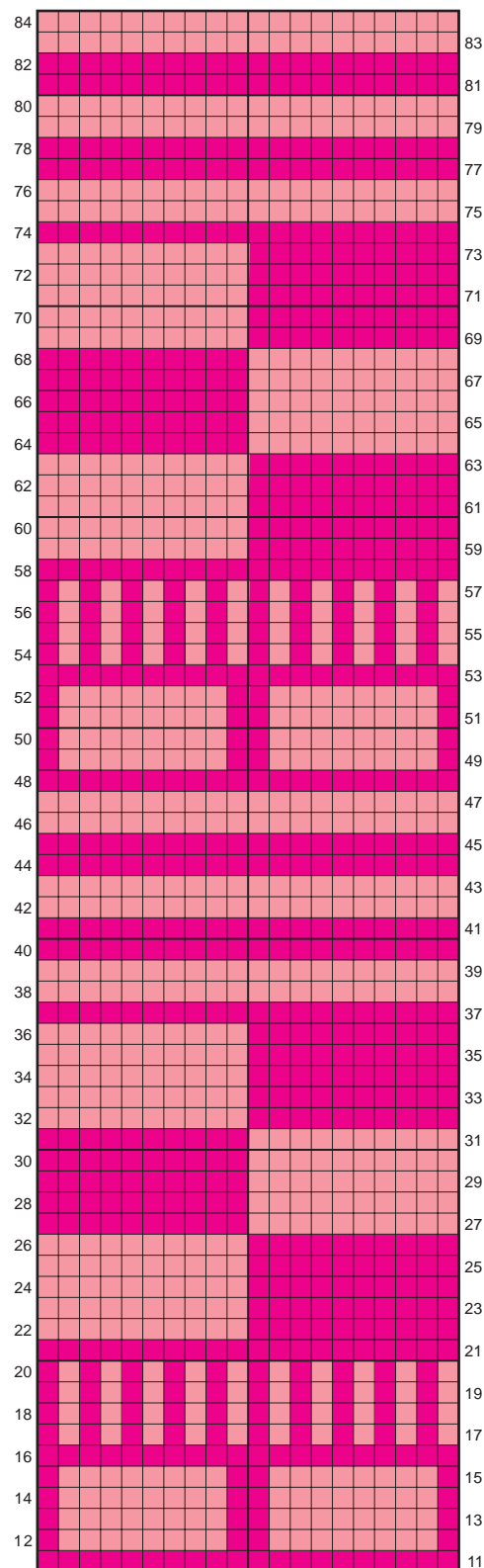


Fig. 1
Berry-licious Scarf





Rnd 16: Ch 1, sc in each st around, changing to magenta.

Rnds 17–30: [Rep rnds 15 and 16 alternately] 7 times.

Rnds 31 & 32: Ch 1, sc in each st around. At end of last rnd, fasten off.

Brim

Rnd 1: With size I hook, join fuchsia with sc in first st, sc in each st around.

Rnds 2–4: Sc in each st around. At end of last rnd, fasten off. **C!**